

i.Shine 4107Q

Quad Color Spot



USER MANUAL

Thank you very much for choosing our product. For safety purpose, please read this manual carefully before your operation. This manual included installation and using information. Please install and operate it according to this manual.

4107Q V2.0 20120318

Indexing

Part 1 Product(GENERAL)

- 1.1 -- PRODUCT INTRODUCTION
- 1.2 -- PRODUCT FEATURES.
- 1.3 -- TECHNICAL SPECIFICATIONS
- 1.4 -- EXPLODED VIEW
- 1.5 -- DIMENSION
- 1.6 -- SAFETY WARNING

PART 2 INSTALLATION.

- 2.1 -- MOUNTING
- 2.2 -- SETTING UP WITH A DMX512 CONTROLLER
- 2.2-1 -- DMX512 ADDRESSING WITHOUT ID ADDRESS
- 2.2-2 -- DMX512 ADDRESSING WITH ID ADDRESS
- 2.2-3 -- DMX CHANNEL INSTRUCTION

PART 3 DISPLAY PANEL OPERATION

- 3.1 -- DISPLAY PANEL MENU INSTRUCTION
- 3.2 -- DMX512 ADDRESS SET (DMX)
- 3.3 -- ID ADDRESS SET (ID)
- 3.4 -- AUTO- PROGRAM PARAMETERS SET (AUTO)
- 3.5 -- MASTER / SLAVE MACHINE SER MAST/SLAVE
- 3.6 -- WHITE BALANCE FINE-ADJUSTMENT INSTRUCTION
- 3.7 -- DISPLAY MENU INSTRUCTION (GENERAL)

PART 4 TROUBLESHOOTING

PART 5 MAINTENANCE

Part 1 Product

1.1 Product introduction

This product is designed for outdoor use. Suitable applications include wash or effect lighting for architectural, stage or nightclub applications. This product can also be installed for use in signage and advertising using the dynamic functions available with DMX512 control. Direct input of DMX512 signal allows the units to be controlled from any DMX512 controller. This product can be operated as a single unit or in multiple units for large applications.

1.2 Product Features

Optical system:

1-256 grades electric adjustable, mini within 100ms

Strobe: at same step speed adjustable strobe

Cooling system:

Heat cycle cooling system with strong direct air

Operation mode:

**Standard DMX512 signal,(3, 4, 5, 6, 10 channels – 8 modes),
Intelligent ID addressing separately , Intelligent ID group addressing

**Auto-mode

**Master/Slave Mode

Display panel:

4-LED digital display DMX address code, test or play auto-programs.

Auto-mode: 8 preset color change programs.

1.3 Technical Specifications

Voltage: AC90-250V, 50/60Hz

IP rating: IP65

Power: 130W

Light Source: 12PCS*10W RGBW Quad Color LED

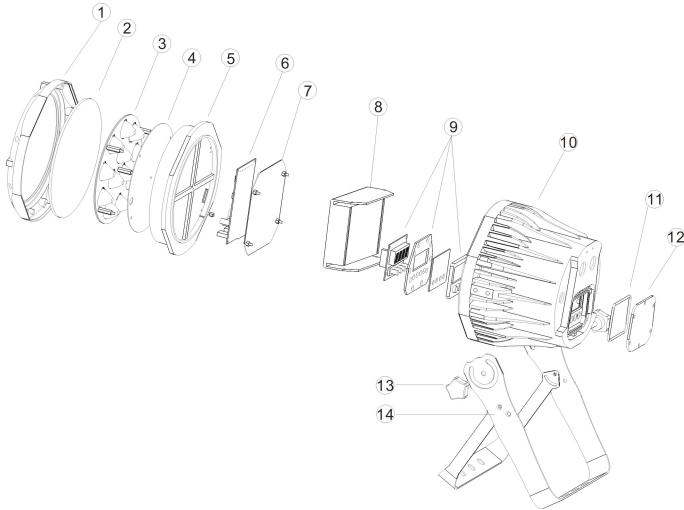
Lifespan: around 50,000 hours (rated by led lamp factory)

Beam angle: 20°, 30°, 40°, 60° (up to order)

Net Weight: 4.2kg

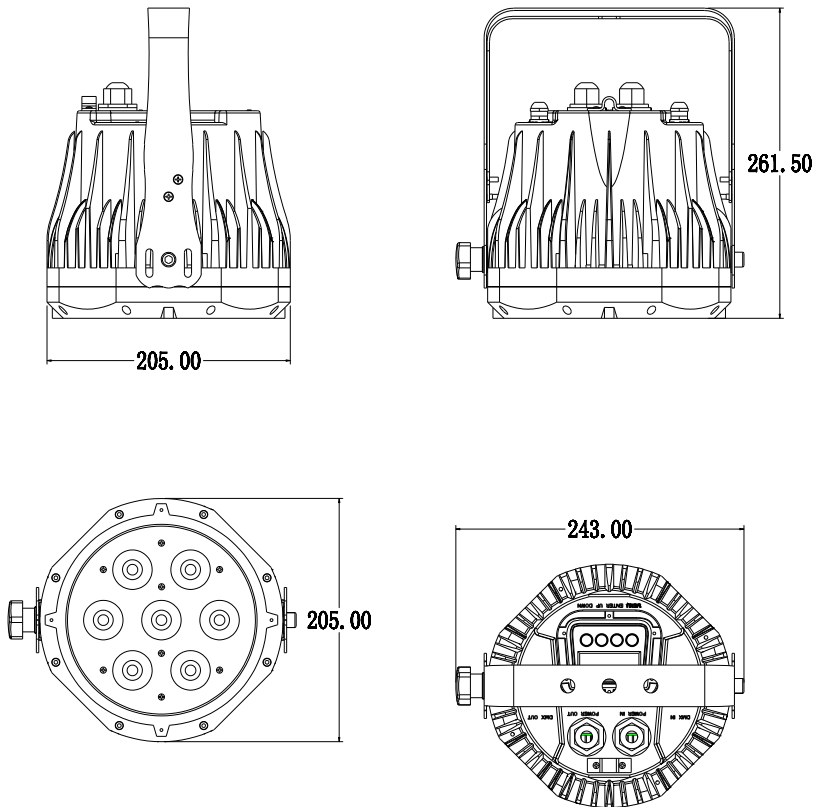
Size: 180*260*300mm

1.4 Exploded view



ITEM	DESCRIPTION	ITEM	DESCRIPTION
1	Glass cover	9	Side cover
2	Lens panel	10	Arm screw
3	Lens	11	Metal case
4	Led lamp	12	Display PCB
5	Led lamp plate	13	Waterproof signal connector
6	Metal plate for power supply	14	Waterproof power connector
7	Power supply	15	bracket
8	Main PCB	16	

1.5 Dimension



1.6 Safety Warning

IMPORTANT:

ALWAYS READ THE USER MANUAL BEFORE OPERATION. PLEASE CONFIRM THAT THE POWER SUPPLY STATED ON THE PRODUCT IS THE SAME AS THE MAINS POWER SUPPLY IN YOUR AREA.

- * This product must be installed by a qualified professional.
- * Always operate the equipment as described in the user manual.
- * A minimum distance of 0.5m must be maintained between the equipment

and combustible surface.

- * The product must always be placed in a well ventilated area.
- * Always make sure that the equipment is installed securely.
- * DO NOT stand close to the equipment and stare directly into the LED light source.
- * Always disconnect the power supply before attempting and maintenance.
- * Always make sure that the supporting structure is solid and can support the combined weight of the products.
- * The earth wire must always be connected to the ground.
- * Do not touch the power cables if your hands are wet.

ATTENTION:

- * This product left the place of manufacture in perfect condition. In order to maintain this condition and for safe operation, the user must always follow the instructions and safety warnings described in this user manual.
- * Avoid shaking or strong impacts to any part of the equipment.
- * Make sure that all parts of the equipment are kept clean and free of dust.
- * Always make sure that the power connections are connected correct and secure.
- * If there is any malfunction of the equipment, contact your distributor immediately.
- * When transferring the product, it is advisable to use the original packaging in which the product left the factory.
- * Shields, lenses or ultraviolet screens shall be changed if they have become damaged to such an extent that their effectiveness is impaired.
- * The lamp (LED) shall be changed if it has become damaged or thermally deformed.

PART 2 INSTALLATION

2.1 Mounting:

2.1-1 Hanging

The product can be mounted in a hanging position using the supporting bracket. The bracket should be secured to the mounting truss or structure using a standard mounting clamp. Please note that when hanging the unit a safety cable should also be used.

2.1-2 Upright

The product can be mounted in an upright or sitting position using the supporting brackets.

NOTE:

The product can be mounted at any angle and in any position. It is possible to further adjust the angle of the product using the two adjustment knobs located on the side of the fixture.

2.2 SETTING UP WITH A DMX512 CONTROLLER

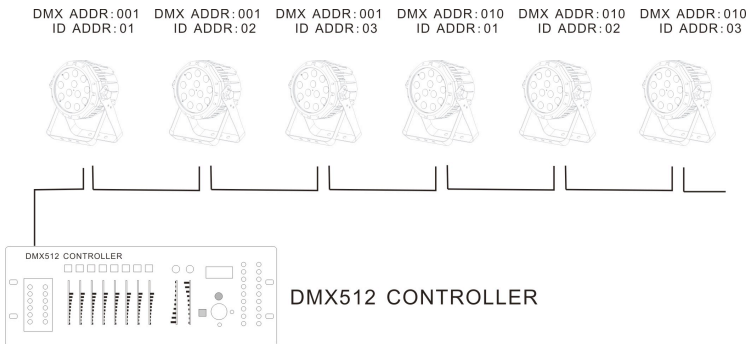
2.2-1 DMX512 ADDRESSING WITHOUT ID ADDRESSING

- Connect the DMX512 controller to the units in series.
- Each unit has 10 DMX channels so the DMX Addresses should increase by increments of 10 (e.g. 1,11,21,31...)
- The ID address has not been set so therefore when using the controller CH10 must be inactive (CH10=0~4).
- Each DMX Address may be used as many times as required.
- Any DMX address in the range from 001 to 512 may be used.

2.2-2 DMX512 ADDRESSING WITH ID ADDRESS

- Connect the DMX512 controller to the units in series
- Each unit has 10 DMX channels so the DMX Addresses should increase by increments of 10 (e.g. 1,11,21,31...)
- Each DMX Address may be used as many times as required.
- Any DMX address in the range from 001 to 512 may be used.
- Each DMX address may carry up to 50 separate ID addresses. ID should be set in the menu on each unit in ascending values (i.e. 1, 2, 3...)
- ID addresses are accessible from Ch10 on the DMX512 controller.

Example:



The figure above shows a simple DMX layout which has used three units at each DMX address. The three units have different ID addresses which allows the user to collectively control the whole group of units at that DMX address by setting CH10 to 0~4, or to control each unit independently by first selecting the DMX address and then by using CH10 to locate the target ID address

2.2-3 DMX channel list

STAG

Chanel	Function & Effect	DMX Value
CH1	Dimmer 0~100%	0<==>255
CH2	Red 0~100%	0<==>255
CH3	Green 0~100%	0<==>255
CH4	Blue 0~100%	0<==>255
CH5	Cool White 0~100%	0<==>255
CH6	Color Macro (8 preset color effect)	0<==>5 No function 6<==>40 Red 41<==>76 Green 77<==>112 Blue 113<==>148 Yellow 149<==>184 Cyan 185<==>220 Purple 221<==>255 White
CH7	Strobe (Strobe speed from slow to fast)	0<==>255
CH8	Auto program-8 programs	0<==>5 No function 6<==>36 Program 1 37<==>68 Program 2 69<==>100 Program 3 101<==>132 Program 4 133<==>164 Program 5 165<==>196 Program 6 197<==>228 Program 7 229<==>255 Program 8
CH9	Program run speed from slow to fast	0<==>255
CH10	ID address 0-50 Group	0<==>4 No Function 5<==>255 ID 1~50

ARC

Chanel	Function & Effect	DMX Value
CH1	Red 0~100%	0<===>255
CH2	Green 0~100%	0<===>255
CH3	Blue 0~100%	0<===>255

ARC2

Chanel	Function & Effect	DMX Value
CH1	Red 0~100%	0<===>255
CH2	Green 0~100%	0<===>255
CH3	Blue 0~100%	0<===>255
CH4	Cool White 0~100%	0<===>255

ARCD

Chanel	Function & Effect	DMX Value
CH1	Dimmer 0~100%	0<===>255
CH2	Red 0~100%	0<===>255
CH3	Green 0~100%	0<===>255
CH4	Blue 0~100%	0<===>255

AR2D

Chanel	Function & Effect	DMX Value
CH1	Dimmer 0~100%	0<===>255
CH2	Red 0~100%	0<===>255
CH3	Green 0~100%	0<===>255
CH4	Blue 0~100%	0<===>255
CH5	Cool White 0~100%	0<===>255

ARCS

Chanel	Function & Effect	DMX Value
CH1	Dimmer 0~100%	0<===>255
CH2	Red 0~100%	0<===>255

CH3	Green 0~100%	0<==>255
CH4	Blue 0~100%	0<==>255
CH5	Strobe 0~100%	0<==>255

AR2S

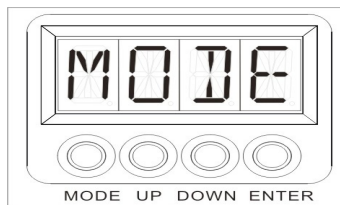
Chanel	Function & Effect	DMX Value
CH1	Dimmer 0~100%	0<==>255
CH2	Red 0~100%	0<==>255
CH3	Green 0~100%	0<==>255
CH4	Blue 0~100%	0<==>255
CH5	Cool White 0~100%	0<==>255
CH6	Strobe 0~100%	0<==>255

HSV

Chanel	Function & Effect	DMX Value
CH1	HUE 256 colors 0~100%	0<==>255
CH2	Saturation 0~100%	0<==>255
CH3	Value 0~100%	0<==>255

PART 3 Display Panel Operation

3.1 Display panel menu instruction



[MODE] menu selection or return to previous menu.

[UP] press [UP] through the menu list to increase/change the value of the current function.

[DOWN] press [DOWN] through the menu list to decrease/change the value of the current function.

[ENTER] confirm & quit out current function setting.

3.2 DMX512 address set (DMX)

Press [MODE] until d.001 and then press [UP]/[DOWN] to set DMX address between d.001 - d.512, press [ENTER] to save.

3.3 ID address set (ID)

Press [MODE] until ID.00, use UP/DOWN to select ID address between ID.00 - ID.50 and then press [ENTER] to save.

If ID address is 0, the 9th channel will out of function.

3.4 Auto-program parameters set (AUTO)

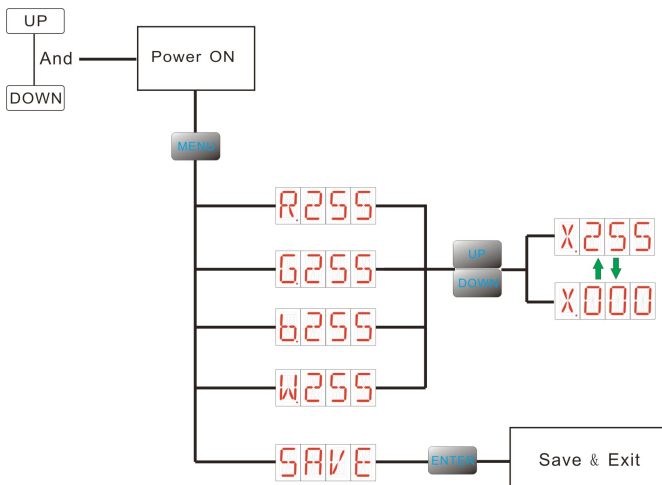
Press [MODE] until AUTO to run preset programs (8 programs selectable). The default situation is run all 8 preset programs in recycle and these programs could be turned off after some parameters are changed.

Press [MODE] until AUTO and then use [UP] to select 8 preset programs and use [DOWN] to set these 8 programs [ON]/[OFF].

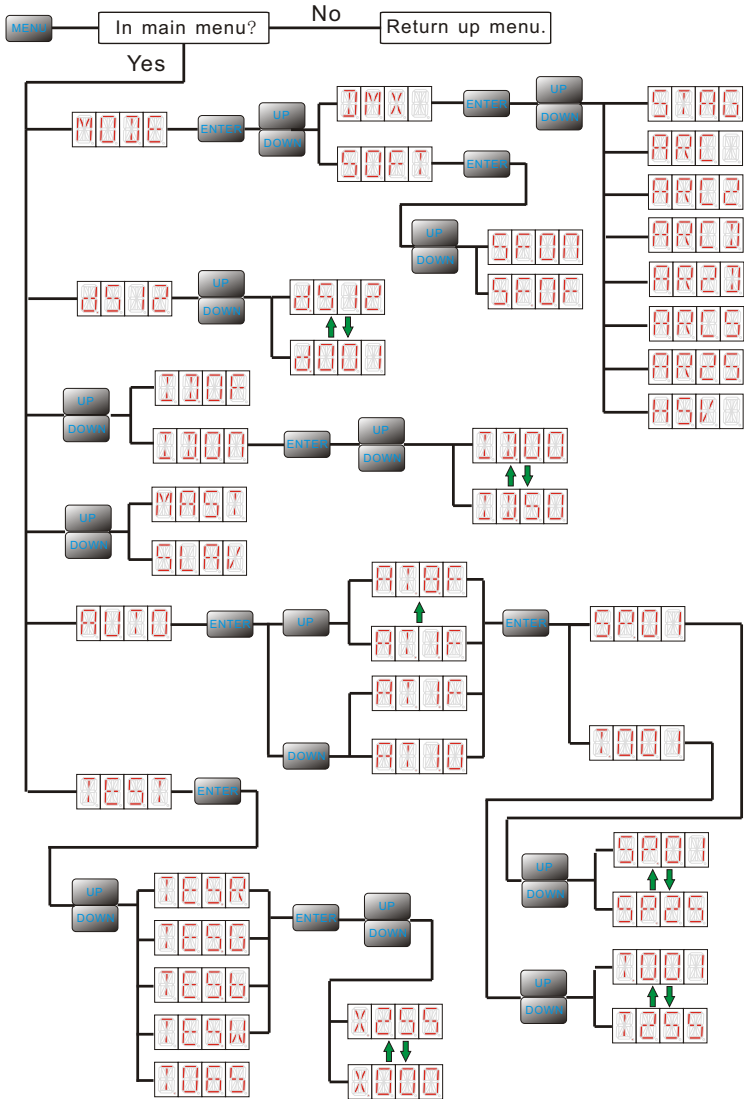
3.5 Master / Slave machine set MASTER/SLAVE

Press [MODE] until [MAST] (Master machine) or [SLAV] (Slave machine) to enter Master/Slave edit menu, Press [ENTER] to select Master or Slave fixture.

3.6 White Balance fine-adjustment instruction



3.7 Display Menu instruction (general)



Part 4, Troubleshooting

Phenomenon	Solution
* The fixture does not work * No light out	* Check main power fuse & power cable connection * Measure main voltage on the main connector
* No display	* Check connection of display PCB * Replace a new display
* No responding to DMX controller	* Check working mode setting on display is DMX mode or not * Check whether the unit be set as SLAVE * Check DMX address settings * Check DMX cable and it's connection * Try to use another DMX console
*Signal error while use DMX	* Check whether DMX cables be connected well or not * Check whether the DMX cable has to be terminated with a terminator to reduce signal errors. If not, please Solder a 120-ohm 1/4W resistor between pin 2(DMX-) and pin 3(DMX+) into a 3-pin XLR-plug and plug it in the DMX-output of the last fixture

Part 5, Maintenance

The cleaning of internal must be carried out periodically to optimize light output. Cleaning frequency depends on the environment in which the fixture operates: damp, smoky or particularly dirty surrounding can cause greater accumulation of dirt on the fixture's optics.

☆ Clean with soft cloth using normal glass cleaning fluid.

☆ Always dry the parts carefully.

☆ Clean the external optics at least every 20 days.

☆ Clean the internal optics at least every 30/60 days – Up to vary products.

Please ask professional technical to clean waterproof products and make sure the fixture will be reassembled well for waterproof.