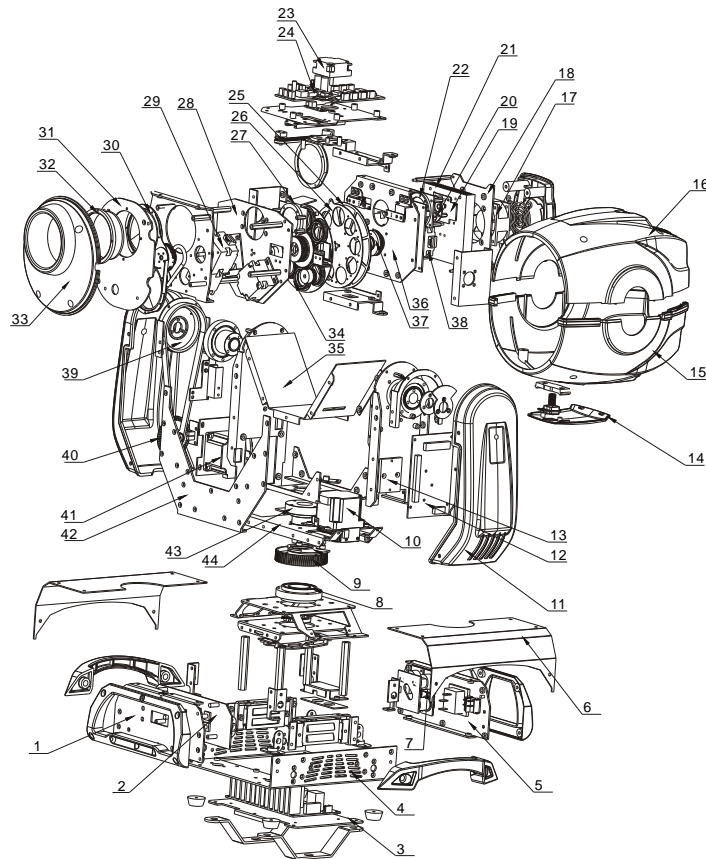


5 APPENDIX

5.1 MAINTENANCE



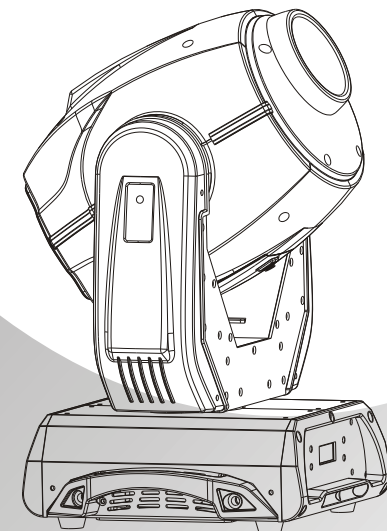
No	ITEM
1	Base board(display)
2	Display board
3	Power supply support
4	Base box back plate
5	Base box cover(PS)
6	Base box side cover
7	Adaptor PCB
8	X axes bearing block combination
9	X axes pulley
10	Stepping motor
11	LED628 arm
12	Driver board
13	XY heat slug
14	LED628 door lid

No	ITEM
15	Plastic door body
16	Plastic body slam shut
17	Fan
18	Head fan fixed plate
19	LED board
20	Lens
21	Heat sink
22	Φ40 lens support A
23	Stepping motor
24	Driver board
25	Color board
26	Fixed pattern plate
27	Φ40 lens support A
28	Rotation pattern holder
29	Stepping motor

No	ITEM
30	Prism combination
31	Camera lens backstop
32	Camera lens cover
33	LED628 head cover
34	Gobo wheels
35	Arm cover
36	Fixed pattern plate bracket
37	Color board turn tooth-components
38	Stepping motor
39	Y-large gear
40	Optical wheel
41	Stepping motor
42	Arm bracket
43	X principal axis
44	Arm connection board A

INDIGO 3000XS

USER MANUAL



SS628SC

SILVER STAR
Professional Lighting

www.yajiang.cn

RD-SS628-SM-00(SS-I)

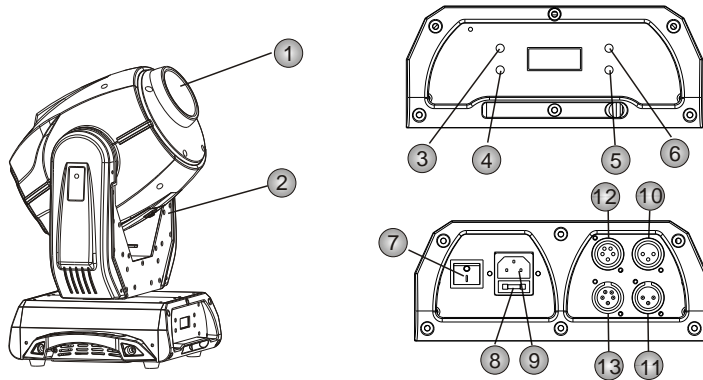
V: #002

1 PRODUCT SPECIFICATIONS

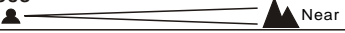

1.1 PRODUCT SPECIFICATIONS

- ◆ Voltage: AC100~240V, 50/60Hz
- ◆ Max Power: 80W
- ◆ Size: 330X270X473mm
- ◆ Weight: 10kg

1.2 PRODUCT FEATURES



No	ITEM	No	ITEM	No	ITEM
1	Head	6	Up	11	DMX 3-PIN signal output
2	Side arm	7	Switch	12	DMX 5-PIN signal input
3	Menu	8	Fuse holder	13	DMX 5-PIN signal output
4	Enter	9	Power input		
5	Down	10	DMX 3-PIN signal input		

CHANNEL	VALUE	FUNCTION
6	0 ↔ 60	GOBO 2 ROTATION 360° indexing
	61 ↔ 150	Clockwise rotate from slow to fast
	151 ↔ 165	No function
	166 ↔ 255	Anti-clockwise rotate from slow to fast
7	0 ↔ 4	PRISM & PRISM ROTATION White light
	5 ↔ 9	Prism but not turn
	10 ↔ 127	Anti-clockwise rotate from slow to fast
	128 ↔ 132	Prism but not turn
	133 ↔ 255	Clockwise rotate from slow to fast
8	0 ↔ 255	FOCUS Far  Near
9	0 ↔ 255	DIMMER Dark  Bright
10	0 ↔ 31	STROBE Close
	32 ↔ 63	Open
	64 ↔ 95	Strobe: Slow > Fast
	96 ↔ 127	Open
	128 ↔ 159	Rulse strobe effect: Slow > Fast
	160 ↔ 191	Open
	192 ↔ 223	Random strobe effect: Slow > Fast
	224 ↔ 255	Open
11	0 ↔ 19	CONTROL No function (After 3 S move light show board curve is preferred)
	20 ↔ 39	Pan/tilt black activated
	40 ↔ 59	Pan/tilt black deactivated
	60 ↔ 79	Fan automatic
	80 ↔ 99	Fan slow
	100 ↔ 119	Fan standard
	120 ↔ 139	Fan high-speed
	140 ↔ 149	Auto1
	150 ↔ 159	Auto2
	160 ↔ 169	Test
	170 ↔ 179	Custom
	180 ↔ 189	Sound 1
	190 ↔ 199	Sound 2
	200 ↔ 219	Reset
	220 ↔ 235	No function
	236 ↔ 239	DIM0
	240 ↔ 243	DIM1
244 ↔ 247	DIM2	
248 ↔ 251	DIM3	
252 ↔ 255	DIM4	
		Note: no use for empty when word control to no effect.

PERSON2

CHANNEL	VALUE	FUNCTION
1	0 ↔ 255	PAN 0~540°
2	0 ↔ 255	PAN FINE 0~270°
3		COLOR
	0 ↔ 9	NO
	10 ↔ 19	Red
	20 ↔ 29	Green
	30 ↔ 39	Yellow
	40 ↔ 49	Blue
	50 ↔ 59	Orange
	60 ↔ 69	Magenta
	70 ↔ 79	Light Blue
	80 ↔ 99	Light Blue → Magenta
	100 ↔ 119	Magenta → Orange
	120 ↔ 139	Orange → Blue
	140 ↔ 159	Blue → Yellow
	160 ↔ 179	Yellow → Green
180 ↔ 199	Green → Red	
200 ↔ 219	Red → White	
220 ↔ 255	Rainbow or linear effect	
4		GOBO 1
	0 ↔ 10	NO GOBO
	11 ↔ 20	GOBO 1
	21 ↔ 30	GOBO 2
	31 ↔ 40	GOBO 3
	41 ↔ 50	GOBO 4
	51 ↔ 60	GOBO 5
	61 ↔ 70	GOBO 6
	71 ↔ 80	GOBO 7
	81 ↔ 90	GOBO 8
	91 ↔ 105	Shaking gobo 8
	106 ↔ 120	Shaking gobo 7
	121 ↔ 135	Shaking gobo 6
	136 ↔ 150	Shaking gobo 5
	151 ↔ 165	Shaking gobo 4
	166 ↔ 180	Shaking gobo 3
	181 ↔ 195	Shaking gobo 2
	196 ↔ 210	Shaking gobo 1
	211 ↔ 255	Flow effect
5		GOBO 2
	0 ↔ 10	NO GOBO
	11 ↔ 20	GOBO 1
	21 ↔ 30	GOBO 2
	31 ↔ 40	GOBO 3
	41 ↔ 50	GOBO 4
	51 ↔ 60	GOBO 5
	61 ↔ 70	GOBO 6
	71 ↔ 80	GOBO 7
	81 ↔ 95	Shaking gobo 7
	96 ↔ 110	Shaking gobo 6
	111 ↔ 125	Shaking gobo 5
	126 ↔ 140	Shaking gobo 4
	141 ↔ 155	Shaking gobo 3
	156 ↔ 170	Shaking gobo 2
	171 ↔ 185	Shaking gobo 1
	186 ↔ 255	Flow effect

1.3 SAFETY WARNING

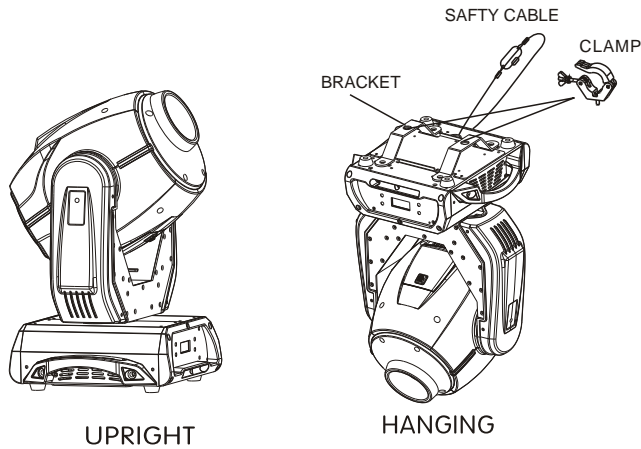
IMPORTANT:

- This product must be installed by a qualified professional.
- All maintenance must be carried out by a qualified electrician.
- A minimum distance of 0.5m must be maintained between the equipment and a combustible surface.
- The product must always be operated in a well ventilated area.
- DO NOT stare directly into the LED light source.
- Always disconnect the power before carrying out any maintenance.
- The earth must always be connected to the ground.
- Ensure that all parts of the equipment are kept clean and free of dust.

2 INSTALLATION

2.1 MOUNTING:

- The fixture can be mounted in any position.
- Always ensure that mounting surface can withstand 10 times the weight of the fixture.
- Always use a safety cable when mounting the fixture in any elevated position.



IMPORTANT SAFETY NOTE!!
 Always use a safety cable when installing this unit!!
 Be sure that the safety cable is connected to a solid load-bearing structure.

CHANNEL	VALUE	FUNCTION
8	GOBO 2	
	0 ↔ 10	NO GOBO
	11 ↔ 20	GOBO 1
	21 ↔ 30	GOBO 2
	31 ↔ 40	GOBO 3
	41 ↔ 50	GOBO 4
	51 ↔ 60	GOBO 5
	61 ↔ 70	GOBO 6
	71 ↔ 80	GOBO 7
	81 ↔ 95	Shaking gobo 7
	96 ↔ 110	Shaking gobo 6
	111 ↔ 125	Shaking gobo 5
	126 ↔ 140	Shaking gobo 4
	141 ↔ 155	Shaking gobo 3
	156 ↔ 170	Shaking gobo 2
	171 ↔ 185	Shaking gobo 1
	186 ↔ 255	Flow effect
9	GOBO 2 ROTATION	
	0 ↔ 60	360° indexing
	61 ↔ 150	Clockwise rotate from slow to fast
	151 ↔ 165	No function
166 ↔ 255	Anti-clockwise rotate from slow to fast	
10	PRISM & PRISM ROTATION	
	0 ↔ 4	White light
	5 ↔ 9	Prism but not turn
	10 ↔ 127	Anti-clockwise rotate from slow to fast
	128 ↔ 132	Prism but not turn
133 ↔ 255	Clockwise rotate from slow to fast	
11	FOCUS	
	0 ↔ 255	Far Near
12	DIMMER	
	0 ↔ 255	Dark Bright
13	STROBE	
	0 ↔ 31	Close
	32 ↔ 63	Open
	64 ↔ 95	Strobe: Slow > Fast
	96 ↔ 127	Open
	128 ↔ 159	Pulse strobe effect: Slow > Fast
	160 ↔ 191	Open
	192 ↔ 223	Random strobe effect: Slow > Fast
224 ↔ 255	Open	
14	CONTROL	
	0 ↔ 19	No function (After 3 S move light show board curve is preferred)
	20 ↔ 39	Pan/tilt black activated
	40 ↔ 59	Pan/tilt black deactivated
	60 ↔ 79	Fan automatic
	80 ↔ 99	Fan slow
	100 ↔ 119	Fan standard
	120 ↔ 139	Fan high-speed
	140 ↔ 149	Auto1
	150 ↔ 159	Auto2
	160 ↔ 169	Test
	170 ↔ 179	Custom
	180 ↔ 189	Sound 1
	190 ↔ 199	Sound 2
	200 ↔ 219	Reset
	220 ↔ 235	No function
	236 ↔ 239	DIM0
240 ↔ 243	DIM1	
244 ↔ 247	DIM2	
248 ↔ 251	DIM3	
252 ↔ 255	DIM4	
		Note: no use for empty when word control to no effect.

4 USING A DMX512 CONTROLLER

4.1 CHANNEL ASSIGNMENT

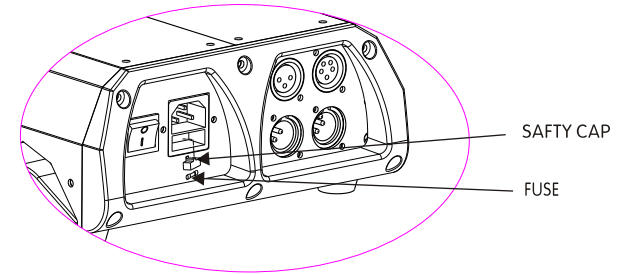
- Note: This product have two DMX512 channel configuration: **PERSON1** and **PERSON2**.

PERSON1

CHANNEL	VALUE	FUNCTION
1	0 ↔ 255	PAN 0~540°
2	0 ↔ 255	PAN FINE Fine control of tilt movement 0~3°
3	0 ↔ 255	TILT 0~270°
4	0 ↔ 255	TILT FINE Fine control of tilt movement 0~3°
5	0 ↔ 255	PAN/TILT SPEED From fast to slow
6		COLOR
	0 ↔ 9	NO
	10 ↔ 19	Red
	20 ↔ 29	Green
	30 ↔ 39	Yellow
	40 ↔ 49	Blue
	50 ↔ 59	Orange
	60 ↔ 69	Magenta
	70 ↔ 79	Light Blue
	80 ↔ 99	Light Blue → Magenta
	100 ↔ 119	Magenta → Orange
	120 ↔ 139	Orange → Blue
	140 ↔ 159	Blue → Yellow
	160 ↔ 179	Yellow → Green
180 ↔ 199	Green → Red	
200 ↔ 219	Red → White	
220 ↔ 255	Rainbow or linear effect	
7		GOBO1
	0 ↔ 10	NO GOBO
	11 ↔ 20	GOBO 1
	21 ↔ 30	GOBO 2
	31 ↔ 40	GOBO 3
	41 ↔ 50	GOBO 4
	51 ↔ 60	GOBO 5
	61 ↔ 70	GOBO 6
	71 ↔ 80	GOBO 7
	81 ↔ 90	GOBO 8
	91 ↔ 105	Shaking gobo 8
	106 ↔ 120	Shaking gobo 7
	121 ↔ 135	Shaking gobo 6
	136 ↔ 150	Shaking gobo 5
	151 ↔ 165	Shaking gobo 4
	166 ↔ 180	Shaking gobo 3
	181 ↔ 195	Shaking gobo 2
	196 ↔ 210	Shaking gobo 1
	211 ↔ 255	Flow effect

2.3 FUSE REPLACEMENT

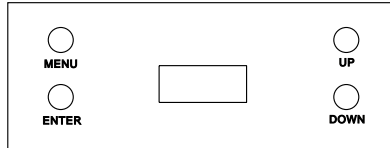
- Remove the safety cap by a screwdriver.
- Fetch the old fuse from safety cap.
- Install a new fuse.
- Install the safety cap.



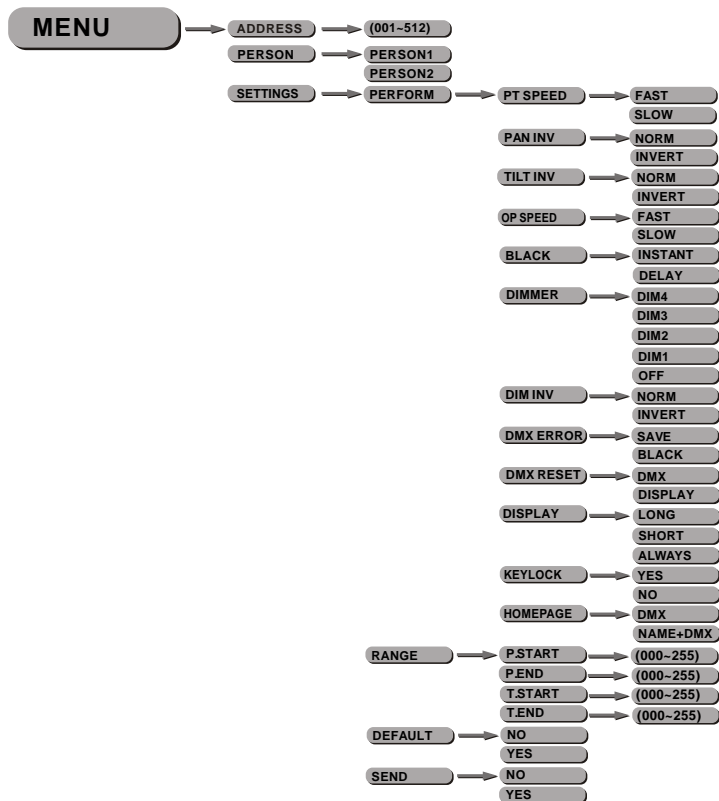
3 DISPLAY PANEL OPERATION

3.1 BASIC

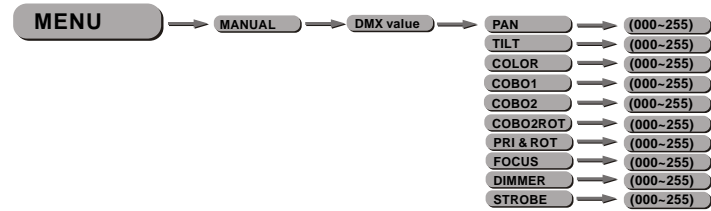
- 【 MENU 】** Scroll through the main menu or exit from the current sub-menu
- 【 ENTER 】** Enter the currently selected menu or confirm the current function value
- 【 DOWN 】** Scroll 'DOWN' through the menu list or decrease the value of the current function
- 【 UP 】** Scroll 'UP' through the menu list or increase the value of the current function



3.2 MENU



3.72 MANUAL



- Adjust the values of **【 PAN/TILT/COLOR/COBO1/COBO2/COBO2ROT/PRI & ROT/FOCUS/DIMMER/STROBE 】** in order to carry out manual control

3.71 ACCESS



- **【 SETTLOCK 】** menu, select **【 ON 】** to enable access to **【 SETTINGS 】** menu
- **【 SERV LOCK 】** menu, select **【 ON 】** to enable access to **【 SERVICE 】** menu

3.82 INFO



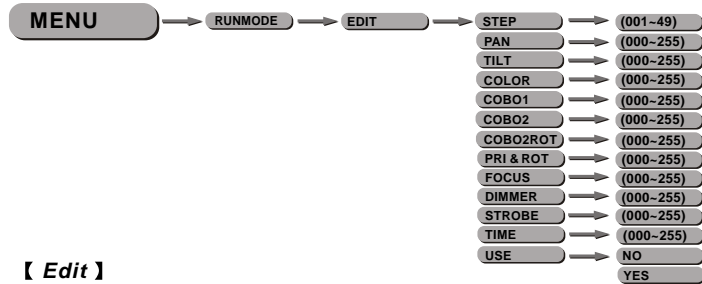
- **【 INFO 】** software version number

3.83 CONTENT



- **【 DISPLAY1 】** menu, edit first line of display content
- **【 SEND 】** menu, select **【 YES 】** in order to transfer display content to all fixtures currently connected via data cable

3.62 EDIT



【 Edit 】

- Enter the **【 Edit 】** mode to edit the custom programs by adjusting the value of **【 STEP 】**, **【 PAN 】**, **【 TILT 】**, **【 COLOR 】**, **【 COBO2 】**, **【 COBO2ROT 】**, **【 PRI & ROT 】**, **【 FOCUS 】**, **【 DIMMER 】**, **【 STROBE 】**, **【 TIME 】**
- Enter **【 Use 】** and select **【 Yes 】** to run the steps user need.

Note: if user want to circulate the created steps, please set the last step 's **【 Time 】** as 0

For example, there are 3 steps, the setting should be like belowed:

- Step 1 **【 Time 】** = 4 **【 Use 】** = Yes
- Step 2 **【 Time 】** = 5 **【 Use 】** = Yes
- Step 3 **【 Time 】** = 0 **【 Use 】** = Yes

3.63 SEND

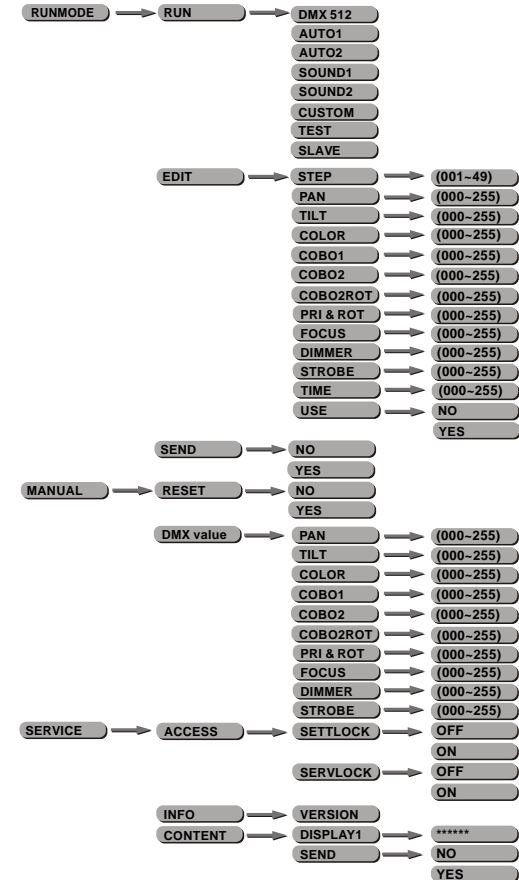


- **【 SEND 】** menu, select **【 YES 】** to send all custom programs to in-line fixtures.

3.71 MANUAL



- **【 RESET 】** menu, select **【 YES/NO 】** to carry out full fixture reset



3.3 DMX ADDRESS (ADDRESS)



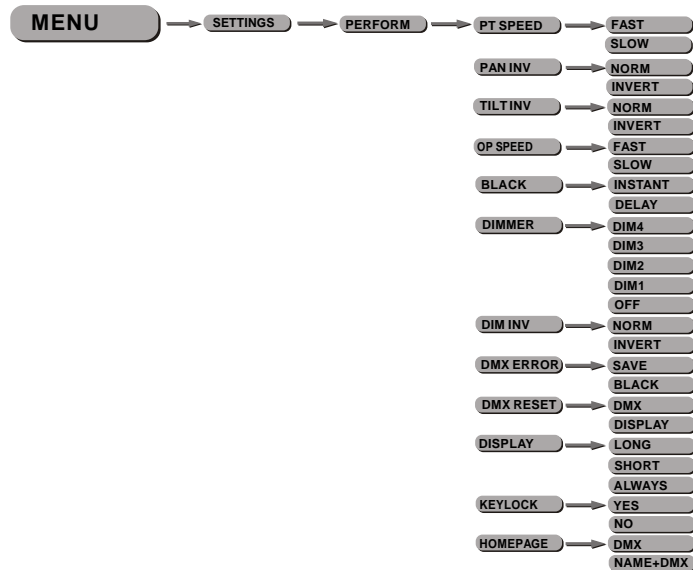
- Enter the **【 DMX 】** mode to set the DMX ADDRESS.

3.4 PERSONALITY (PERSON)



- Enter the **【 PERSON 】** mode to select DMX mode: **【 PERSON1 】**, **【 PERSON2 】**.

3.51 PERFORMANCE(PERFORM)



- **【PT SPEED】** menu, select **【Slow/Fast】** for required PAN/TILT movement speed.
- **【PAN INV】** menu, select **【NORM/INVERT】** for normal/inverted control of the PAN function
- **【TILT INV】** menu, select **【NORM/INVERT】** for normal/inverted control of the TILT function
- **【OP SPEED】** menu, select **【SLOW/FAST】** for required optics speed
- **【BLACK】** menu, select **【INSTANT】** for immediate activation of PAN/TILT blackout when selected using the control channel or **【DELAY】** for 3 second delay before activation. **【DIMMER】** menu for selection of **【DIM1/DIM2/DIM3/DIM4/OFF】** special dimming curves
- **【DIM INV】** menu, select **【NORMAL/INVERT】** for normal/inverted control of DIMMING function
- **【DMXerror】** menu, select **【SAVE】** to maintain last command or **【BLACK】** for blackout in case of DMX error.
- **【DMXreset】** menu, select **【DMX】** to allow remote reset using DMX controller or **【DISPLAY】** for reset only available at on-fixture display
- **【DISPLAY】** menu, select **【LONG/SHORT/ALWAYS】** to determine the time mode for the display backlight.
- **【KEYLOCK】** menu, select **【YES】** in order to lock the display when not in use or on start-up.
- **【HOMESCREEN】** menu, select **【DMX】** to display DMX address or **【NAME】** to display user-created content when display not in use.

3.52 RANGE



- **【P/START】** Set pan start value **【000~255】**
- **【P/END】** Set pan finish value **【000~255】**
- **【T/START】** Set Tilt start value **【000~255】**
- **【T/END】** Set Tilt finish value **【000~255】**

3.53 DEFAULT



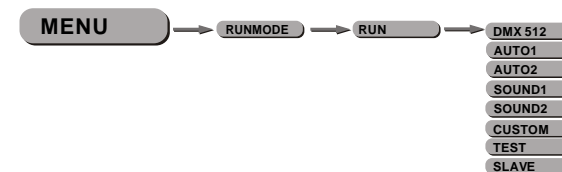
- **【DEFAULT】** menu, select **【YES】** to reset all settings to default.

3.54 SEND



- **【SEND】** menu, select **【YES】** to send all settings to in-line fixtures.

3.61 RUN



- **【RUN】** menu, select required run mode.