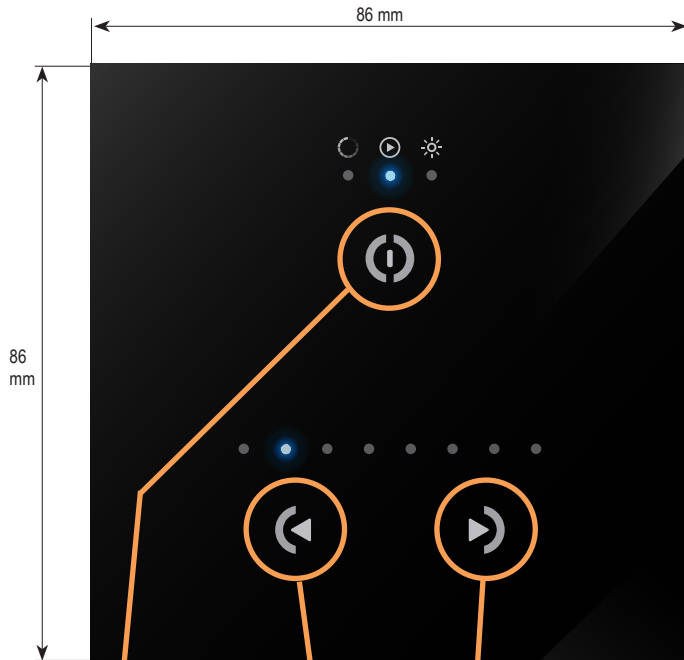
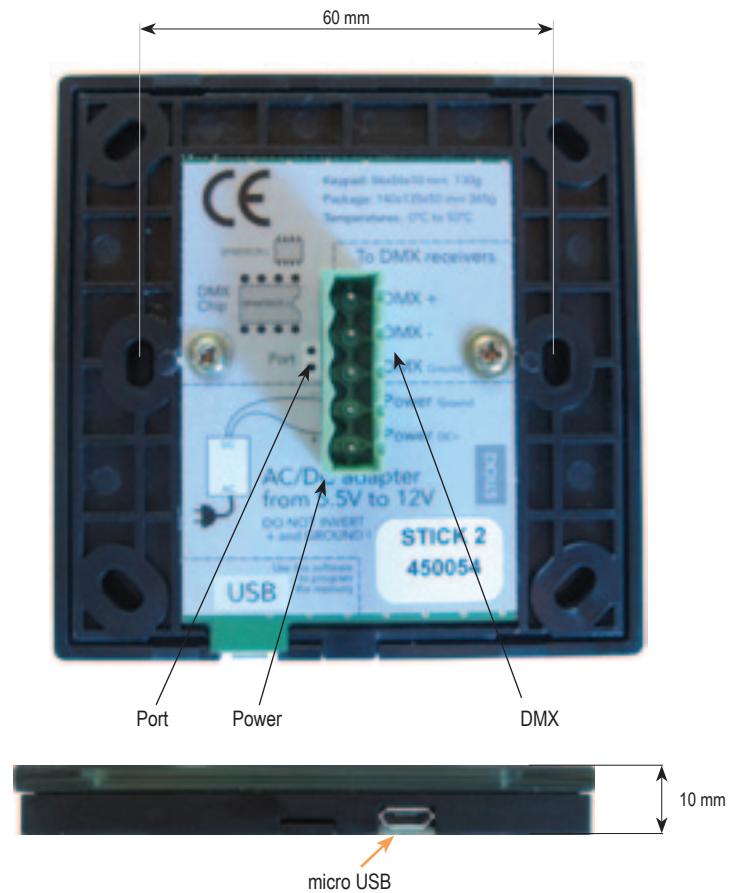


- DMX Stand Alone Controller (128 channels) with a glass face
- 3 touch sensitive buttons (on/off/mode, previous, next)
- Up to 24 dynamic or static scenes (8 first visualized by a led)
- Live setting of the intensity and color of a scene
- Programmable through the included USB cable and control software
- Compatible with any DMX fixture or DMX LED driver
- Ready to use (pre-loaded with 8 scenes and 42 RGB fixtures)
- Latest ARM CPU technology
- Customized design for OEM, wall mountable
- One dry contact trigger port on PCB



**PREVIOUS**    **NEXT**

**ON/OFF** : Short touch - Easy switch on and off  
**CHANGE MODE** : Touch and hold  
 To switch between color, scene and dimmer mode



Port    Power    DMX

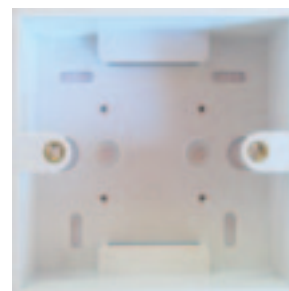
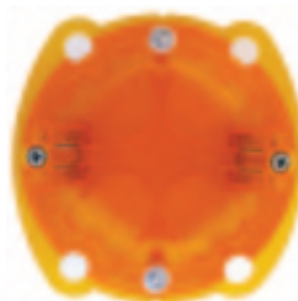
micro USB

SPECIFICATIONS		AVAILABLE MEMORY	
		Depending on the number of scenes used	
Package	Controller, cdrom, usb cable, connector block	CHANNELS	STEPS Using 8 scenes
<b>OS requirement</b>	Mac OSx 10.6/10.7/10.8 - Windows XP/VISTA/SEVEN/8 32/64 bits and USB 2.0	<b>8</b>	1691
<b>Software</b>	Easy Stand Alone, ESA2 (PC & Mac)	<b>16</b>	1011
<b>Versions</b>	Black glass design, White glass design	<b>32</b>	557
<b>Connections</b>	Power (2pins) DMX (3pins) Port (2 pins) Micro-usb	<b>48</b>	383
<b>Power</b>	from 5.5V to 12V DC(AC/DC adapter in option). Max 5.5v with USB	<b>64</b>	291
<b>Certifications</b>	EC, EMC, ROHS, ETL, UL (some are in process)	<b>80</b>	233
<b>Keypad</b>	86x86x10 mm 110g	<b>96</b>	195
<b>Package</b>	140x135x50 mm 365g	<b>112</b>	166
<b>Use</b>	Environnement IP20 Temperature 0°C to 50°C	<b>128</b>	145

# EASY INSTALLATION

## 1. Mount an electrical box inside the wall

The S.T.I.C.K. controller can be installed in a standard 60mm electrical backbox.  
 You can insert the AC/DC adapter inside or outside the backbox.



## 2. Connect the wires

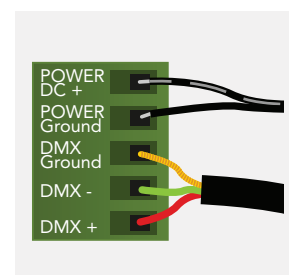
Use the green connector block

### POWER+DMX

WITH THE CONNECTOR BLOCK

**DMX:** Connect the DMX cable to the lighting receivers (Leds, Dimmers, Fixtures..) (for XLR: 1=ground 2=dmx- 3=dmx+)

**POWER:** Connect the AC/DC adapter. Make sure not to invert the + and the ground.



## 3. Mount the interface on the wall

First, plug the green connector block

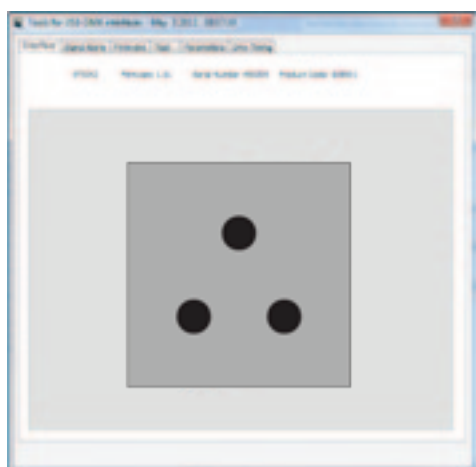
Secondly, mount the back side of the interface on the wall with 2 or more screws

Then, close the unit by clipping the front panel onto the back plate

Wait 30 seconds for the touch sensitivity to adjust

# SOFTWARE

**TOOLS.EXE** to set parameters



**ESA2 (PC & Mac)** to make lighting programs

